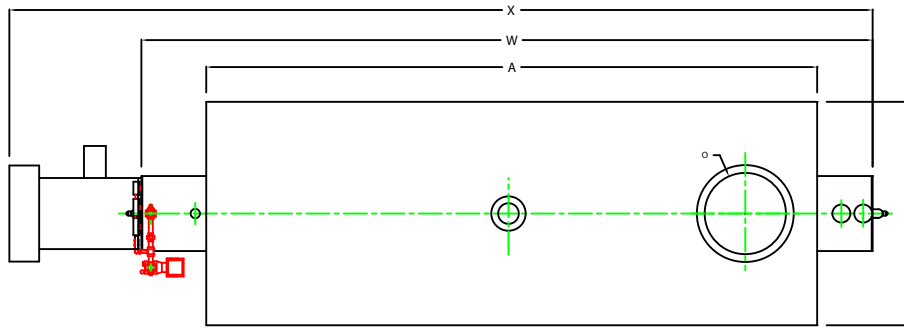
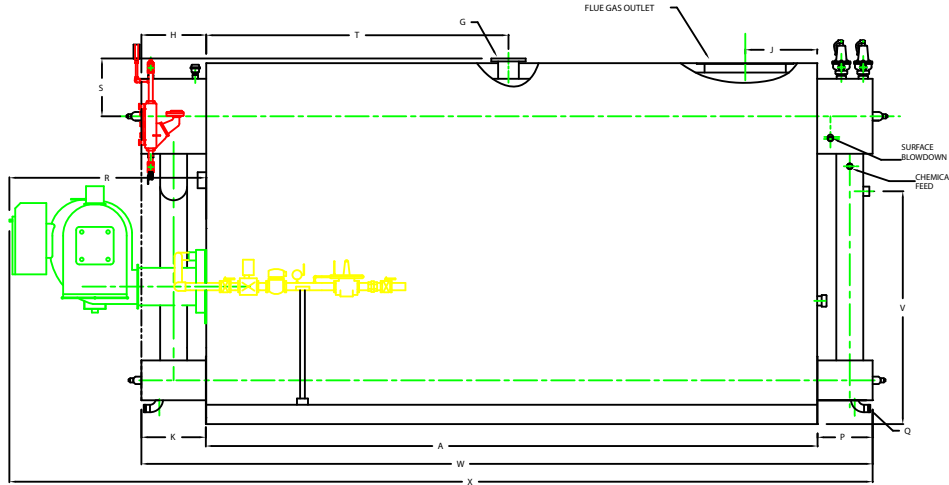


ZF2000HS

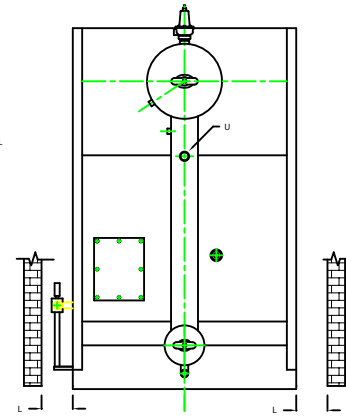


PLAN

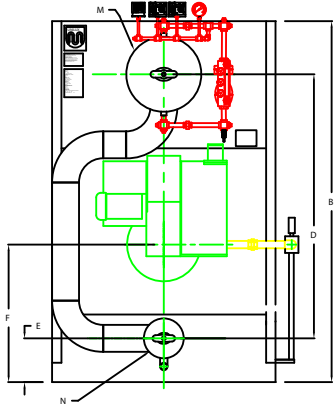
CHIMNEY FLANGE DIMS:
 O.D. = 31"
 I.D. = 26-1/4"
 B.C.D = 28-1/2"
 NO. OF HOLES = 12
 HOLE DIAMETER = 0.53"



SIDE VIEW



REAR VIEW



FRONT VIEW

NOTE: DIMENSIONS SUBJECT TO CHANGE WITHOUT NOTICE
 CONSULT FACTORY FOR CERTIFIED DIMENSIONS.

	INCHES	METRIC
A	195 7/8	4975
AX	LENGTH OF SUPPORT FROM BASE	
B	HEIGHT	2929
C	WIDTH OF BASE	1816
D	CTR. LOWER DRUM TO CTR. UPPER DRUM	3146
E	CENTER OF LOWER DRUM TO BOTTOM	351
F	CENTER OF BURNER OPENING TO BOTTOM	1393
G	OUTLET FLANGE CLASS 300	303
H	DRUM CLEARANCE FROM TOP FRONT	562
I	CENTER OF FLUE GAS OUTLET TO REAR	484
J	DRUM CLEARANCE FROM BASE, FRONT	543
K	TUBE REMOVAL CLEARANCE FROM BASE	1372
L	UPPER DRUM, O.D. NPS	610
M	LOWER DRUM, O.D. NPS	324
N	FLUE GAS OUTLET I.D.	660
P	DRUM CLEARANCE FROM BASE, REAR	467
Q	BLOWDOWN NPT	31
R	BURNER DIMENSION	1600
S	CENTER OF TOP DRUM TO TOP OF OUTLET	470
T	CENTER OF OUTLET TO ENCLOSURE FRONT	2461
U	INLET, 3000 PSI ASK HALF COUPLING	57
V	FEEDWATER INLET FROM BASE	1888
W	OVERALL BOILER LENGTH	6004
X	OVERALL BOILER LENGTH W/ BURNER	7042

NOTE: "X" DIMENSION MAY VARY BASED ON BURNER

UNILUX ADVANCED MFG., LLC.	
30 COMMERCE PARK DRIVE INGRAM, NY 13209 PH: (518) 344-7490 FAX: (518) 344-7495	
SEE DRAWING FOR DIMENSIONS AND TOLERANCES. UNLESS OTHERWISE SPECIFIED, ALL DIMENSIONS ARE IN INCHES. DIMENSIONS SHOWN IN PARENTHESES ARE METRIC EQUIVALENTS.	
PROJECT:	
LOCATION:	ZF 2000HS
APPROVED:	
BURNER:	
ELECTRIC:	
SERVICES:	
Drawn By:	REF BACAZA Date: 05AUG09
Checked By:	DAVID RAMSON Date: 05AUG09
Drawing No:	08040000 Scale: NTS
File No:	J8000000 REV: 1